

A nighttime photograph of a city skyline. The sky is dark blue. In the foreground, a body of water reflects the city lights. Several buildings are illuminated with warm yellow and white lights. A prominent skyscraper on the right side is lit up with a grid of lights, and its top has a red light. Another building in the center has a bright blue light on its roof.

**CYMA**

# Company Profile

*Take a step towards excellence, show the  
height of science and technology*

Zhejiang Aoma Elevator Co.,Ltd

Add:No.2555,Qianghua Road,Nanxun Economic  
Development Zone,Huzhou,Zhejiang,China

Tel:+86-0572-3636576

Email:cyma@vksfujilift.com

Website:www.vksfujilift.com

# CYMA

2021 version

## CONTENT

1. About us
2. Management system
3. What we make
4. Solution flow chart
5. Different kinds of elevators
6. Some product designs
7. Company certificate
8. Some successful projects
9. Our factory
10. Service system





# CYMA



## ABOUT US

Zhejiang Aoma Elevator Company is located in Nanxun, Huzhou, Zhejiang. Nanxun is a veritable smart elevator city. Smart Town takes the overall elevator manufacturing as its core, integrates leading domestic elevator parts companies, introduces high-end technical talents, realizes technological innovation, and builds a leading elevator industry in China.

We are an elevator company that mainly integrates design, manufacturing, sales, installation and after-sales service. Our products include: passenger elevators, home elevators, sightseeing elevators, moving walks, escalators, car elevators, hospital elevators, shopping cart escalators and other types of electric and various elevator accessories, to provide you with choices.

The company has high-end manufacturing equipment, introduces advanced German technology, and specializes in creating higher-end and safer elevator products for you. We always adhere to the height of the international elevator industry, introduce advanced equipment at home and abroad, strive to improve production efficiency and product quality, and only provide you with better and safer elevator products.

The company always puts the customer first and takes every elevator seriously. We will tailor it for you according to the different needs of customers to meet your needs for elevator use.

We focus on producing high-quality elevators to serve you. Safety is our first pursuit of product quality. We always insist: "Safety: There is only a starting point, no end."







## Our Mission

We believe in proving ourselves by consistently performing and delivering on our promises, and we are committed to provide total customers satisfaction and achieve leadership in chosen markets, products and services across the globe, through excellence in technology, based on world-class research and development.

our vision is to achieve market leadership through providing exceptional value to our customers. In addition to providing competitive products, we must deliver industry leading services and world class customer care. In order to do so our business processes must be designed to serve our customers in a hassle free and responsive manner. We Determine to provide better quality.

## Our Vision



## Our Values

### •SAFETY

Safety is our highest priority and may never be compromised.

### •EXCELLENCE

We strive to be best-in-class and are proud to put our name to what we do.

### •INNOVATION

We proactively explore new territory to benefit both our clients and our company.

### •COMPLIANCE

We always comply with laws and regulations and work to serve our clients and stakeholders.

### •QUALITY

No compromises with quality. We are manufacturing our products strictly following international standard.

### •RELIABILITY

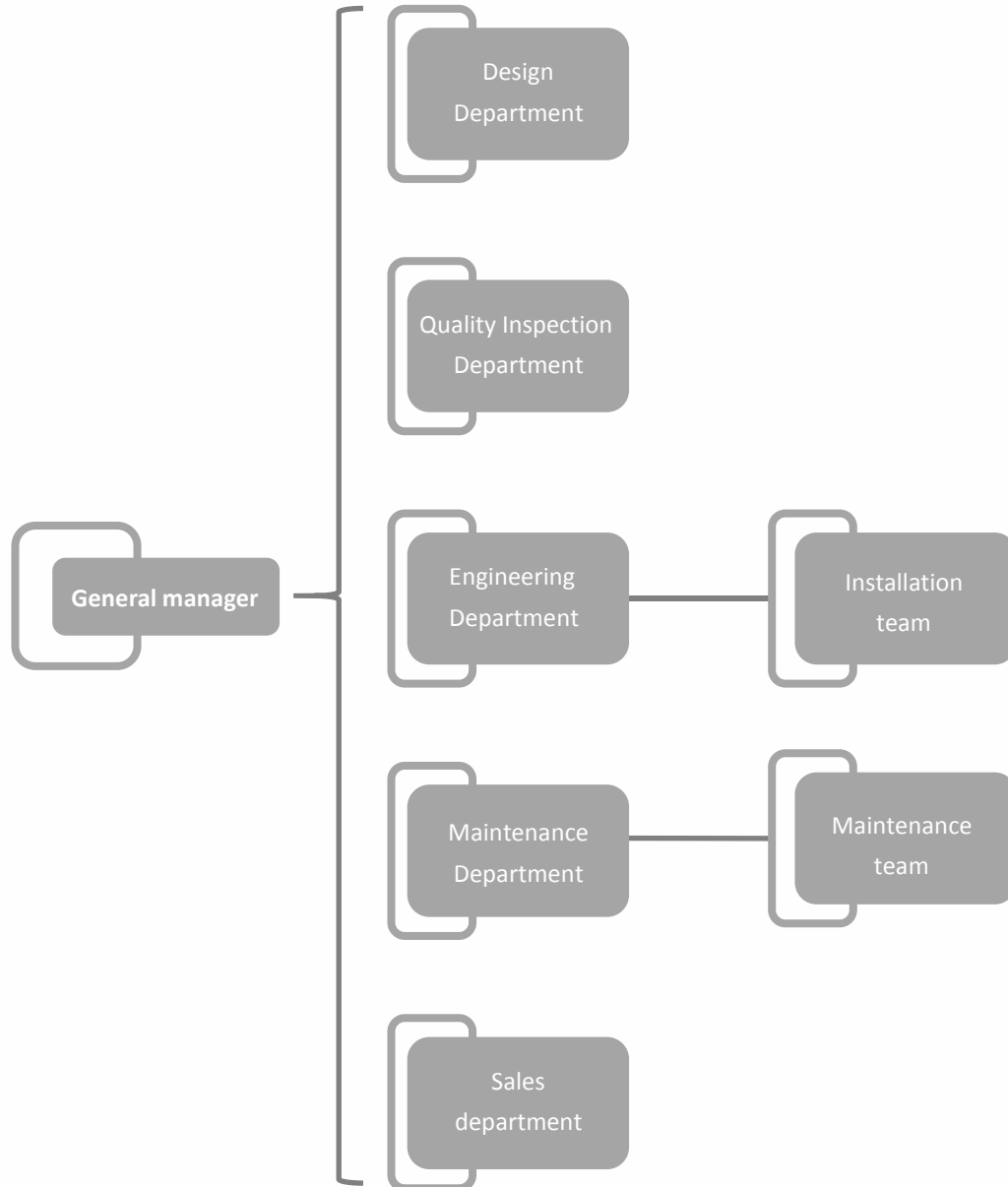
We are a reliable partner in all aspects of our business — being trustworthy is paramount for us.

### •ENVIRONMENT

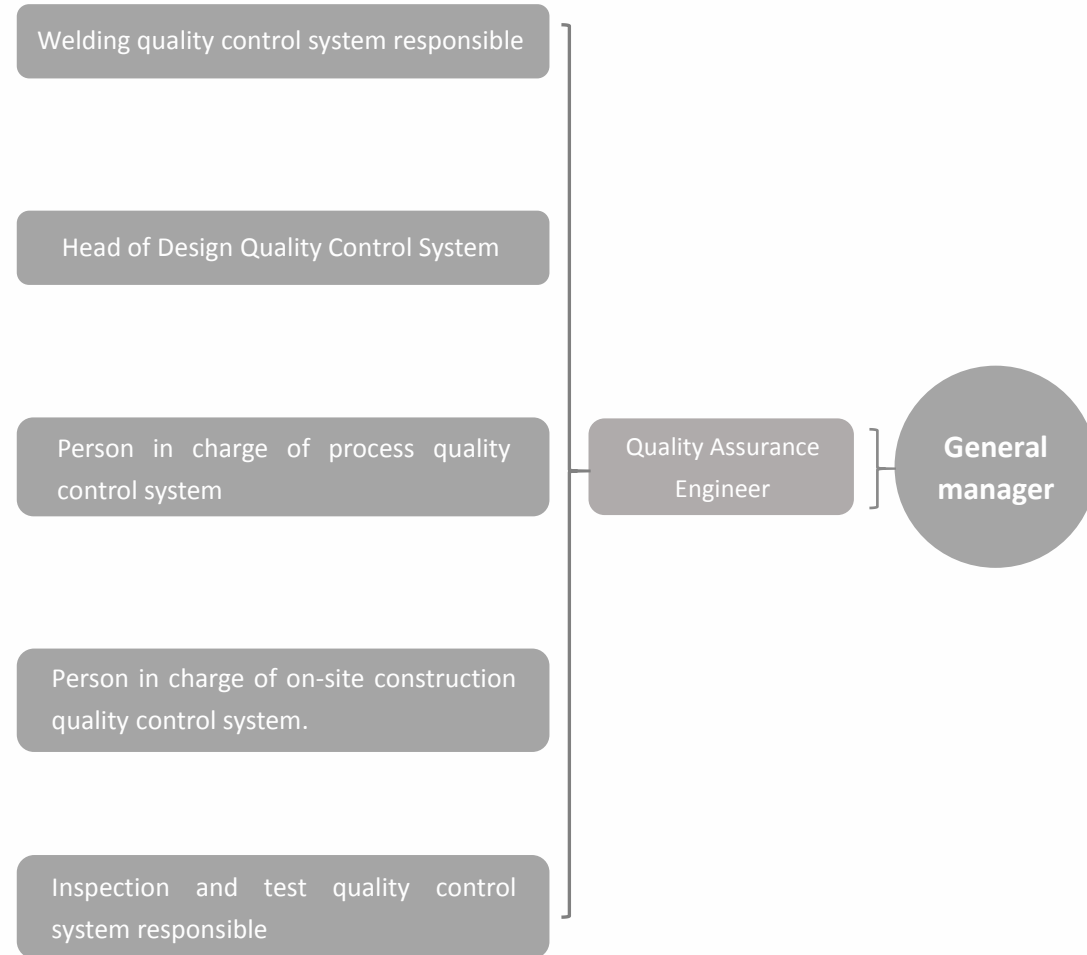
We focus on the environment in all of our business activities, both onshore and offshore.

# Management system

## Organization Chart

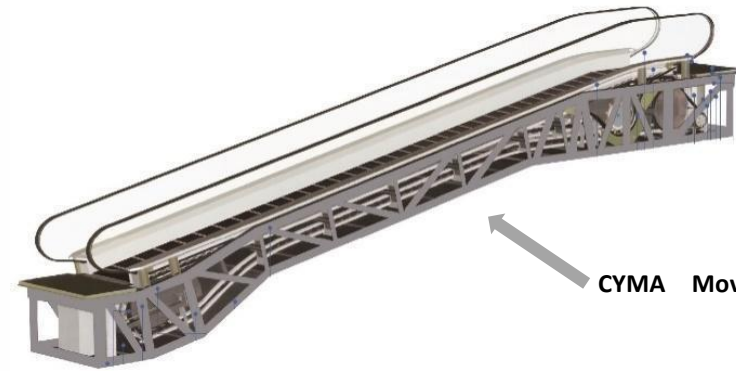


## Quality assurance system structure

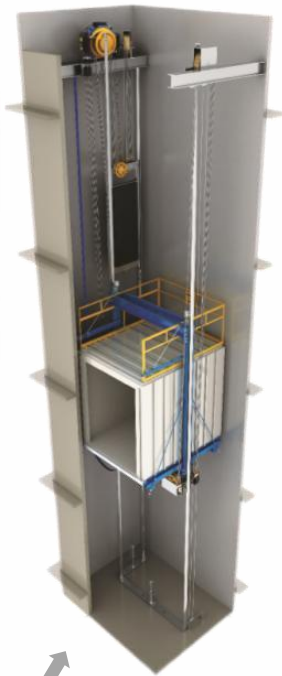


# What we make

CYMA Escalator



CYMA Moving Walks



CYMA Freight Elevator



CYMA High-rise Elevator



CYMA Machine Room-less Elevator



CYMA Machine Room Elevator

# Solution flow chart

1. Design and produce
  - Project Planning
  - Design solution
  - Produce



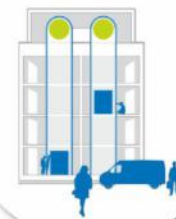
2. Installation
  - Project management
  - Installation method.



3. Maintenance plan
  - Technical assistance
  - Spare Parts support



4. Renewal
  - Initial evaluation
  - Solution

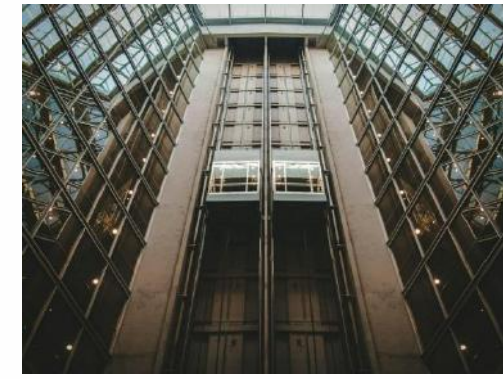






## Passenger elevator

Our company the flourishing developments in the construction industry, elevator is indispensable to the buildings. Express passenger elevator is high quality elevator that integrates the excellent performances and comfortable experience into one. It is your best choice in residence, commercial building, office building, commercial center, hotel, restaurant etc. Express passenger elevators are ample in varieties, e.g. passenger elevator with machine room, small machine room elevator, machine room-less elevator, low speed elevator, medium speed elevator, high speed elevator. Express passenger elevators with complete specifications and beautiful decoration satisfy different requirements from various users in all walks of life in an omni-bearing way.



## Observation elevator

*Super enjoyment of mobile scene*

Fine and exclusive observation elevator enhances building grade. It highlights the whole building. Observation elevator is a mobile scene. Passengers can watch the scenery outside the car when riding in the elevator. It has fine and exquisite visual aesthetics, perfect and comfortable travel. It applies modern new material and new fully computerized, vector type variable frequency speed regulation (VVVF) control technology. It combines with data network system modular structure, the latest machining craft & technology. It is mainly installed in hotels, shopping malls, and high-rise office buildings.





# Villa elevator

The structure of the private house determines that when choosing a home elevator or a villa elevator, the machine room-less home elevator structure should be adopted, thereby saving construction costs and construction space to the greatest extent, while taking care of the appearance and aesthetics of the house.

## Model of villa elevator:

- Traction type villa elevator
- Steel belt villa elevator
- Forced drive villa elevator

## Advantages:

- Running smoothly
- Intelligent control
- Safe operation
- Low noise
- Flexible optional door opening direction







# Moving walk

*Let's pleasantly enjoy a happy life in movements*

Moving walk can not only meet the transportation problem of the large flow of people, and can meet the walking long distances and transport, baggage car, baby carriages, shopping cart, disability and other vehicles, so that people ride especially feeling Rulvpingdi down the stairs on the occasion of the shopping ,greatly and people's travel and shopping.



## Escalator

Escalator series products have been products according to the current international standard and Chinese standard. It fully applies the novel materials and advanced technology both at home and abroad to design and manufacture the escalators. It has the features such as smooth running, low noise, fine durability, convenient repair, fine and exquisite structure, consummate lift-way, remarkable belt-way, attractive outline model, magnificent design style with gentle modern flavor. A safe, cozy and beautiful escalator can let you enjoy the pleasant and comfortable moment every day.

### Reliability

The drive unit that uses high-precision reducer and 6-pole motor features high torque, low noise, stable transmission and good shock absorption.

Finite element analysis is used in truss system design to achieve stable structure, high rigidity and strong supporting capacity. Angle steel is applied in the structure and corrosion.

High-duty structural design, reliable transmission components and different waterproof and anti-corrosion treatments enable the product to adapt to various installation environment.





# Freight elevator

Bear with any heavy load at ease

Freight elevator applies fully computerized modular elevator special-purpose control system, effective and reliable drive mode, gentle and sensitive WVF variable frequency door machine. It can flexibly carry with any heavy loads at ease under various working conditions. High strength car structure, anti-collision strip, light curtain door can satisfy various goods transport uses. It adapts to different building structures. It can competently bear with any heavy loads at ease. It creates a brand-new goods delivery concept.

25%

It saves 25% if total elevator area.

40%

It reduces 40% of space occupation rate



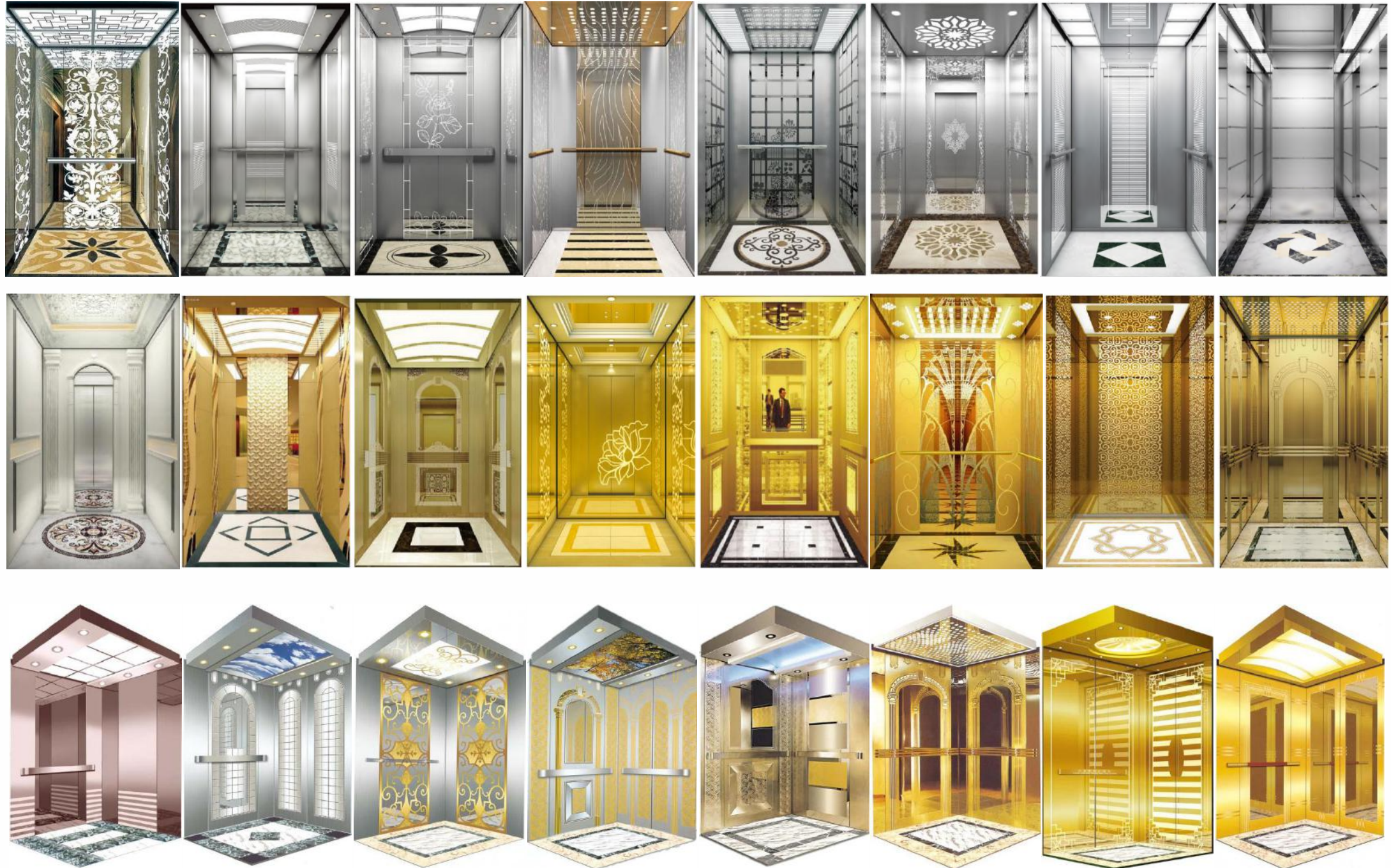
# Car elevator

It deducts extraordinary travel experiences

Automobile elevator introduces well-developed international car elevation technology. It develops and manufactures automobile elevator through absorption, transformation and improvement. Advanced technology removes shaking car problem due to noise, burdened traction system and uneven force to elevator car. It optimizes characteristics of the product series.

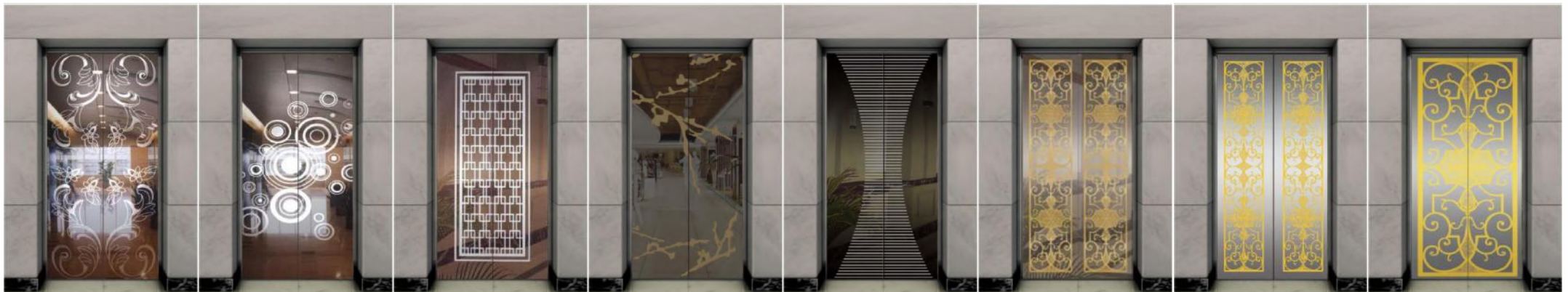


# Product Designs





# Product Designs



# Product Designs



**CMP-01**  
(Standard)



**CMCB-01**  
(Standard)



**CMCB-01A**  
(Optional)



**CMP-04**  
(Optional)



**CMP-02**  
(Optional)



**CMCB-02**  
(Optional)



**CMCB-02A**  
(Optional)



**CMCB-02B**  
(Optional)

Optional button



AN-01



AN-02



AN-03



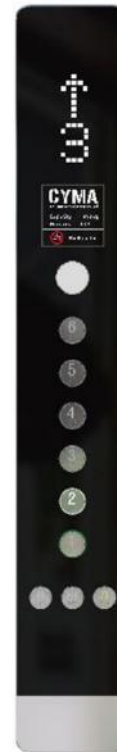
AN-04



AN-05



AN-06



**CMP-03**  
(Optional)



**CMCB-03**  
(Optional)



**CMCB-03A**  
(Optional)

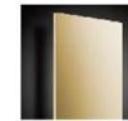
**CMP-05**  
Optional  
Integrated operation panel



Hairline stainless steel  
(Standard)



Mirror stainless steel  
(Optional)



Titanium gold  
stainless steel  
(Optional)

Optional display screen



**CMD-01**  
LCD display  
(Standard)



**CMD-02**  
TFT display  
(Optional)



**CMD-03**  
Advertising display  
(Optional)





# Company Certificate

## European Standard CE

Form QAT\_10-M04, version 00, effective since March 25th, 2020

### Certificate of Compliance



No. 2X210111.ZAE0U11

Test Report / Technical Construction File no. TCF-AOMA-2021-A2

**Certificate's Holder:** Zhejiang Aoma Elevator Co., Ltd.  
2555 Qianghua Road, Nanxun Economic Development Zone, Huzhou City, Zhejiang Province, China  
6666 Qianghua West Road, Nanxun Economic Development Zone, Huzhou City, Zhejiang Province, China

**Certification ECM Mark:**



**Product:** Passenger Elevator  
**Model(s):** AL100, AL180, AL200, AL220, AL500, AL550, AL600

**Verification to:** Standard:  
EN 81-20:2020; EN 81-50:2020  
related to CE Directive(s):  
2014/33/EU (Lifts)

**Remark:** This document has been issued on a voluntary basis and upon request of the manufacturer, it is our opinion that the technical documentation received from the manufacturer is satisfactory for the requirements of the ECM Certification Mark. The conformity mark above can be affixed on the products accordingly to the ECM regulation about its release and its use.

Additional information and clarification about the Marking:



The manufacturer is responsible for the CE Marking process, and if necessary, must refer to a Notified Body. This document has been issued on the basis of the regulation on ECM Voluntary Mark for the certification of products. RG01\_ECM rev.3 available at: [www.entecerma.it](http://www.entecerma.it)

**Issuance date:** 11 January 2021

**Expiry date:** 10 January 2026

Reviewer  
Technical expert  
Amanda Payne

Approver  
ECM Service Director  
Luca Bedonni

Ente Certificazione Macchine Srl

Via Ca' Bella, 243 - Loc. Castello di Serravalle - 40053 Valsamoggia (BO) - ITALY  
☎ +39 051 6705141 📠 +39 051 6705156 ✉ info@entecerma.it 🌐 www.entecerma.it

## European Standard CE

Form QAT\_10-M05, version 00, effective since March 25th, 2020

### Certificate of Compliance



No. 2X201230.ZAEWQ49

Test Report / Technical Construction File no. TCF-AOMA-2020-A1

**Certificate's Holder:** Zhejiang Aoma Elevator Co., Ltd.  
2555 Qianghua Road, Nanxun Economic Development Zone, Huzhou City, Zhejiang Province, China  
6666 Qianghua West Road, Nanxun Economic Development Zone, Huzhou City, Zhejiang Province, China

**Certification ECM Mark:**



**Product:** Escalator  
**Model(s):** AE100, AE160, AE120, AE180

**Verification to:** Standard:  
EN ISO 12100:2010, EN 115-1:2017, EN 60204-1:2018  
related to CE Directive(s):  
2006/42/EC (Machinery)

**Remark:** This document has been issued on a voluntary basis and upon request of the manufacturer, it is our opinion that the technical documentation received from the manufacturer is satisfactory for the requirements of the ECM Certification Mark. The conformity mark above can be affixed on the products accordingly to the ECM regulation about its release and its use.

Additional information and clarification about the Marking:



The manufacturer is responsible for the CE Marking process, and if necessary, must refer to a Notified Body. This document has been issued on the basis of the regulation on ECM Voluntary Mark for the certification of products. RG01\_ECM rev.3 available at: [www.entecerma.it](http://www.entecerma.it)

**Issuance date:** 30 December 2020

**Expiry date:** 29 December 2025

Reviewer  
Technical expert  
Amanda Payne

Approver  
ECM Service Director  
Luca Bedonni

Ente Certificazione Macchine Srl

Via Ca' Bella, 243 - Loc. Castello di Serravalle - 40053 Valsamoggia (BO) - ITALY  
☎ +39 051 6705141 📠 +39 051 6705156 ✉ info@entecerma.it 🌐 www.entecerma.it

Certificate – Сертификат – 證明書 – Certificat – 증명서 – شهادة

Certificate – Сертификат – 證明書 – Certificat – 증명서 – شهادة

# Company Certificate

## ISO 9001:2015



## Russian Standard



ЕВРАЗИЙСКИЙ ЭКОНОМИЧЕСКИЙ СОЮЗ  
ДЕКЛАРАЦИЯ О СООТВЕТСТВИИ

**Заявитель:** ОБЩЕСТВО С ОГРАНИЧЕННОЙ ОТВЕТСТВЕННОСТЬЮ "УСПЕХ", Место нахождения: 141065, РОССИЯ, ОБЛАСТЬ МОСКОВСКАЯ, ГОРОД КОРОЛЕВ, УЛИЦА ГОРЬКОГО, ДОМ 79, КОРПУС 2, КВАРТИРА 96, ОГРН: 1205000039530, Номер телефона: +7 9639625170, Адрес электронной почты: tajmahal88@mail.ru

**В лице** Генерального директора Поправко Алексея Борисовича

**заявляет, что** Оборудование подъемное: эскалатор, модели: АЕ100, АЕ120, АЕ160, АЕ180, АЕ200, АЕ260, АЕ300

**Изготовитель:** «Zhejiang Aoma Elevator Co.,Ltd», Место нахождения: КИТАЙ, 6666 Qianghua West Road, Nanxun Economic Development Zone, Huzhou City, Zhejiang Province, China, Код (коды) ТН ВЭД ЕАЭС: 8428400000 Серийный выпуск

**Соответствует требованиям** ТР ТС 004/2011 О безопасности низковольтного оборудования; ТР ТС 020/2011 Электромагнитная совместимость технических средств

**Декларация о соответствии принята на основании протокола** № ДИЛ04/032020/СТР5016, выдан 15.01.2021 испытательной лабораторией "Испытательный центр «Структура», аттестат аккредитации РОСС RU.31587.ИЦ.000005, адрес: 141069, Московская обл, Королев г, Советская (Первомайский Мкр) ул, дом 39В, литера ГЗ, помещение 1; Схема декларирования: 1д;

**Дополнительная информация** Условия хранения указаны в прилагаемой к продукции товаросопроводительной документации.

**Декларация о соответствии действительна с даты регистрации по 18.01.2026 включительно**



  
 (подпись) М.П. ПОПРАВКО АЛЕКСЕЙ БОРИСОВИЧ  
 (Ф. И. О. заявителя)

**Регистрационный номер декларации о соответствии:** ЕАЭС N RU Д-СН.РА01.В.52932/21

**Дата регистрации декларации о соответствии:**  
19.01.2021



## Some foreign successful projects of our company



Shopping Karvon Center Home Market,Uzbekistan



Urganch Shopping Center,Uzbekistan



komonoya osaka,Saudi Arabia



Hong Kong Fortunate (Viet Nam) Fashion Co., Limited,Vietnam



Makhbar Tahlil Tabayat,Tunisia



Rahmaniya shopping Center,Afghanistan



## Some foreign successful projects of our company



Murtaoev complex ,Tajikistan



Elektronik,Indonesia



Longyu Garden,Taiwan



Unique Shan Complex,Myanmar



Muhindo Musongolya Enos,Dr Congo



Rainy Roof,Bangladesh



Angel Davida,Ecuador



# CYMA



Our  
Factory





# CYMA



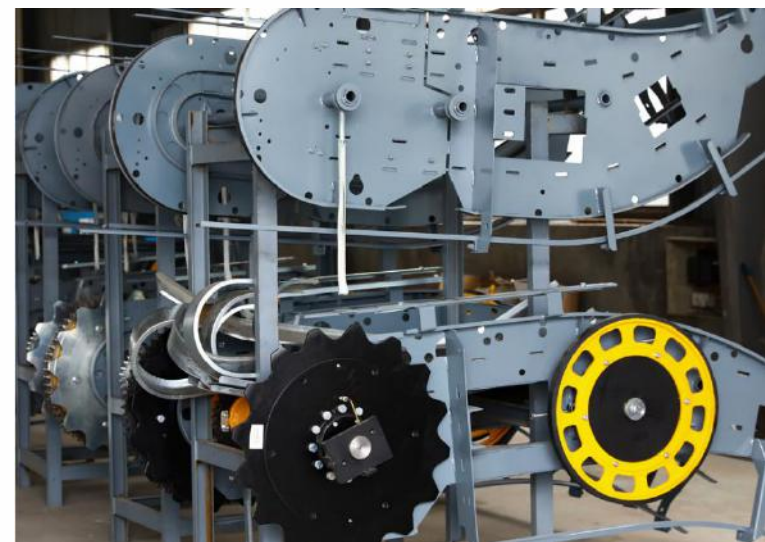
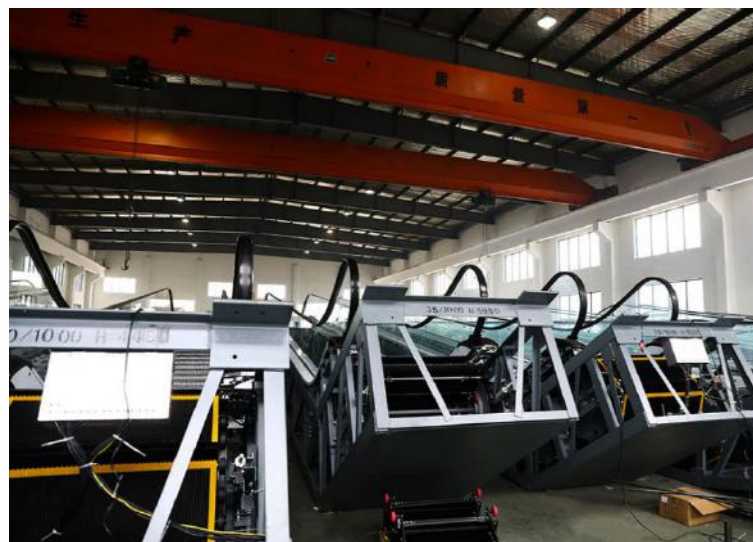
Our  
Factory





# CYMA

## Escalator Production Line





# CYMA

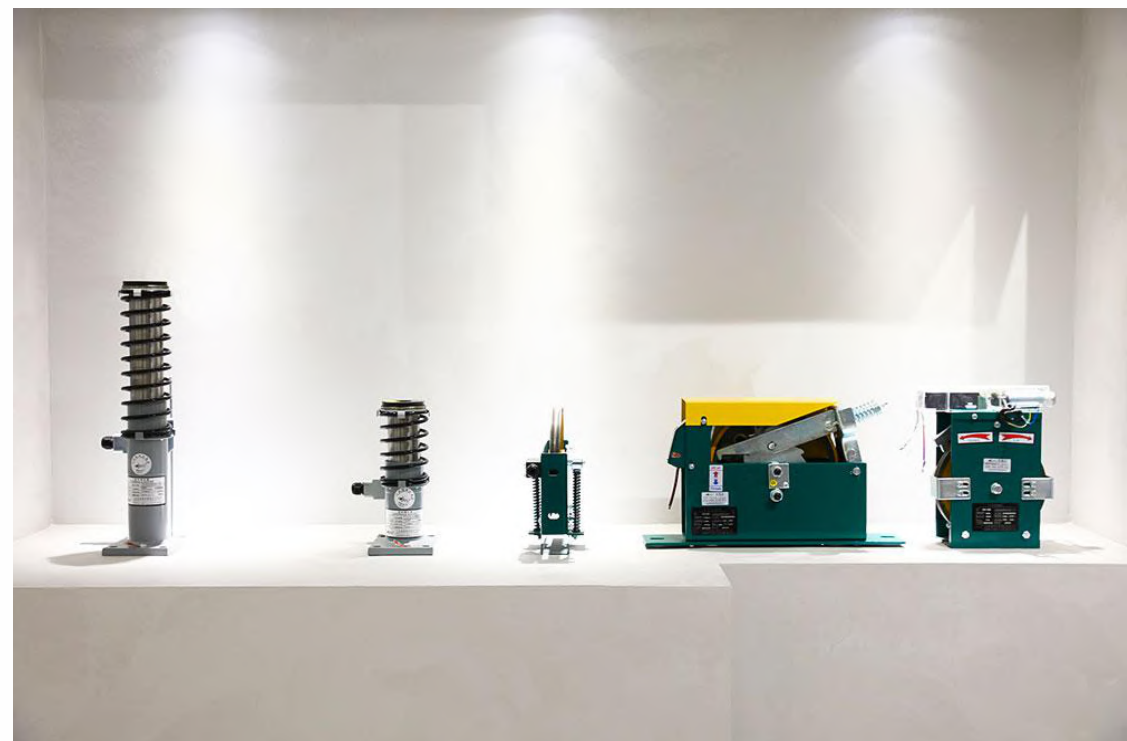
Elevator motor  
and electrical  
parts





# CYMA

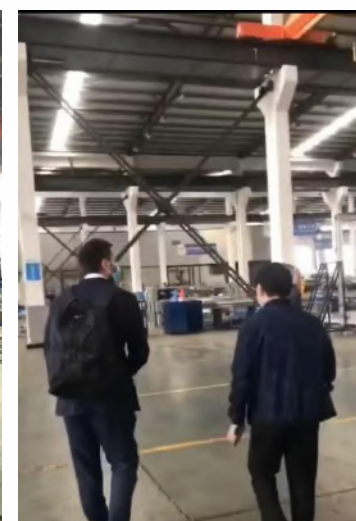
## Elevator parts products





# CYMA

## Foreign partner visitors





# Service system



With advanced technology, rich management experience and high-quality services, scientific maintenance and strict quality control of the products provided are carried out. Choosing CYMA elevator means choosing a complete service system.

- **Certified installation team, efficient and standard installation process to ensure installation quality**
- **Customized maintenance plan based on customer demand, scientific and reasonable**
- **The customer service center provides consulting services 24 hours a day and responds quickly**
- **At each after-sales service station, the inventory of spare parts is checked regularly to ensure that the stock of elevator parts meets the local maintenance needs.**

We have a professional team, a professional service line, to bring you fast service, and a professional maintenance team after sales.



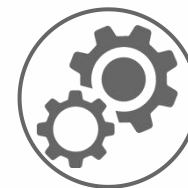
Professional team



Service line



Excellent service



Excellent quality



Professional maintenance



## Excellent service

Strive to be a reliable partner beyond customer expectations.

Provide customer with one-stop and life-cycle service including products consulting, technical supporting, contracting, delivery, installation and maintenance.

## Product Safety

Safety is our primary factor for product quality.

We always insist: "Safety: There is only a starting point, no end."

We take each elevator seriously and will tailor your favorite elevator according to the different needs of customers.

## Service target

*Pursue satisfying experience of customers*

# 100

Installation and maintenance are done right at one time

Zero failure  
Zero complaints  
Zero complaint

Zero violation  
Zero accident  
Zero defect







***THE END***

***Thanks you to stay with us***