



ELEVATOR PARTS

QUALITY / VALUE / SERVICE

Sample (2021 Vision)

Zhejiang Aoma Elevator Co.,Ltd

Add:No.2555,Qianghua Road,Nanxun Economic
Development Zone,Huzhou,Zhejiang,China

Tel:+86-0572-3636576

Email:cyma@vksfujilift.com

Website:www.vksfujilift.com



Do my best to provide the best service



VKS FUJI COMPANY PROFILE

ABOUT US



Zhejiang Aoma Elevator Company is located in Nanxun, Huzhou, Zhejiang. Nanxun is a veritable smart elevator city. Smart Town takes the overall elevator manufacturing as its core, integrates leading domestic elevator parts companies, introduces high-end technical talents, realizes technological innovation, and builds a leading elevator industry in China.

We are an elevator company that mainly integrates design, manufacturing, sales, installation and after-sales service. Our products include:passenger elevators,home elevators, sightseeing elevators, moving walks, escalators, car elevators, hospital elevators, shopping cart escalators and other types of electric and various elevator accessories, to provide you with choices.

The company has high-end manufacturing equipment, introduces advanced German technology, and specializes in creating higher-end and safer elevator products for you.We always adhere to the height of the international elevator industry, introduce advanced equipment at home and abroad, strive to improve production efficiency and product quality, and only provide you with better and safer elevator products.

The company always puts the customer first and takes every elevator seriously. We will tailor it for you according to the different needs of customers to meet your needs for elevator use.

We focus on producing high-quality elevators to serve you. Safety is our first pursuit of product quality. We always insist: "Safety: There is only a starting point, no end."

OVERSPEED GOVERNOR

The speed limiter is one of the safety control components in the elevator safety protection system. When the elevator is in operation for any reason, the car overspeeds or even the danger of falling, and other safety protection devices do not work, the speed limiter and the safety gear or the upward protection device will be linked and stop the elevator car. The speed limiter is generally located on the floor in the elevator machine room, but it can also be installed directly on the load-bearing beam, and the speed limiter without machine room can also be installed on the guide rail or on the floor of the pit.

Our company currently has a variety of series of speed limiter specifications to choose from, which can be applied to different elevator layouts, such as conventional machine room single, two-way speed limiter, machine roomless speed limiter and so on. When choosing to use, customers need to understand the function of the corresponding specification and model speed limiter and the corresponding performance parameters to ensure that the performance of the speed limiter matches the actual state of the elevator.

SAFETY DEVICES SERIES

OVERSPEED GOVERNOR



AM240G01 (Standard)

This product can be equipped with the linkage protection of safety gear, and can also be used in conjunction with a synchronous motor brake or a mechanically triggered rope clamp. It has two-way detection of elevator running speed, two-way mechanical action signal output function, test action and reset need to be manually operated.

It can meet the use of conventional organic room passenger and freight elevators,



AM240G05

Machine roomless (mechanical remote)



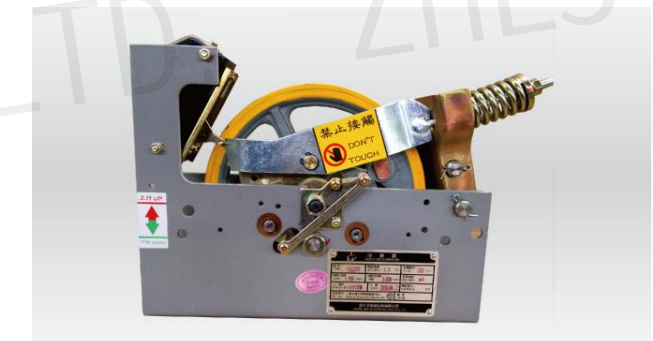
AM240G06

Machine room-less feedback type (mechanical remote)



AM240G07

No machine room (electric remote)



AM200G01

Standard speed limiter



AM240G02

No machine room (remote electric control)



AM240G03

Two-way speed limiter



AM200G02

No machine room (mechanical remote)



AM240G03

No machine room (electric remote)

SAFETY DEVICES SERIES

OVERSPEED GOVERNOR



AM-240 (One-way speed limiter)

For passenger elevators and freight elevators

This product can be equipped with the linkage protection of safety gear, and can also be used in conjunction with a synchronous motor brake or a mechanically triggered rope clamp. It has two-way detection of elevator running speed, two-way mechanical action signal output function, test action and reset need to be manually operated.



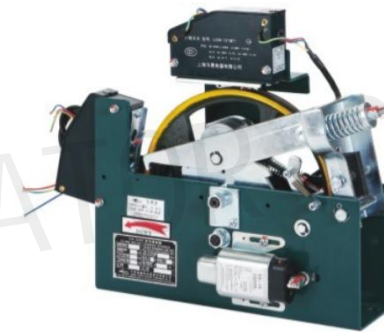
AM-240A

One-way without machine room



AM-240B

Two-way speed limiter



AM-240E

Two-way machine room-less



AM-240F

Two-way speed limiter



AM-187

Two-way machine room-less



AM-186

Two-way villa elevator speed limiter



AM-186A

Villa elevator speed limiter



AM-208

One-way without machine room



AM-208A

Down-mounted overspeed governor mechanism

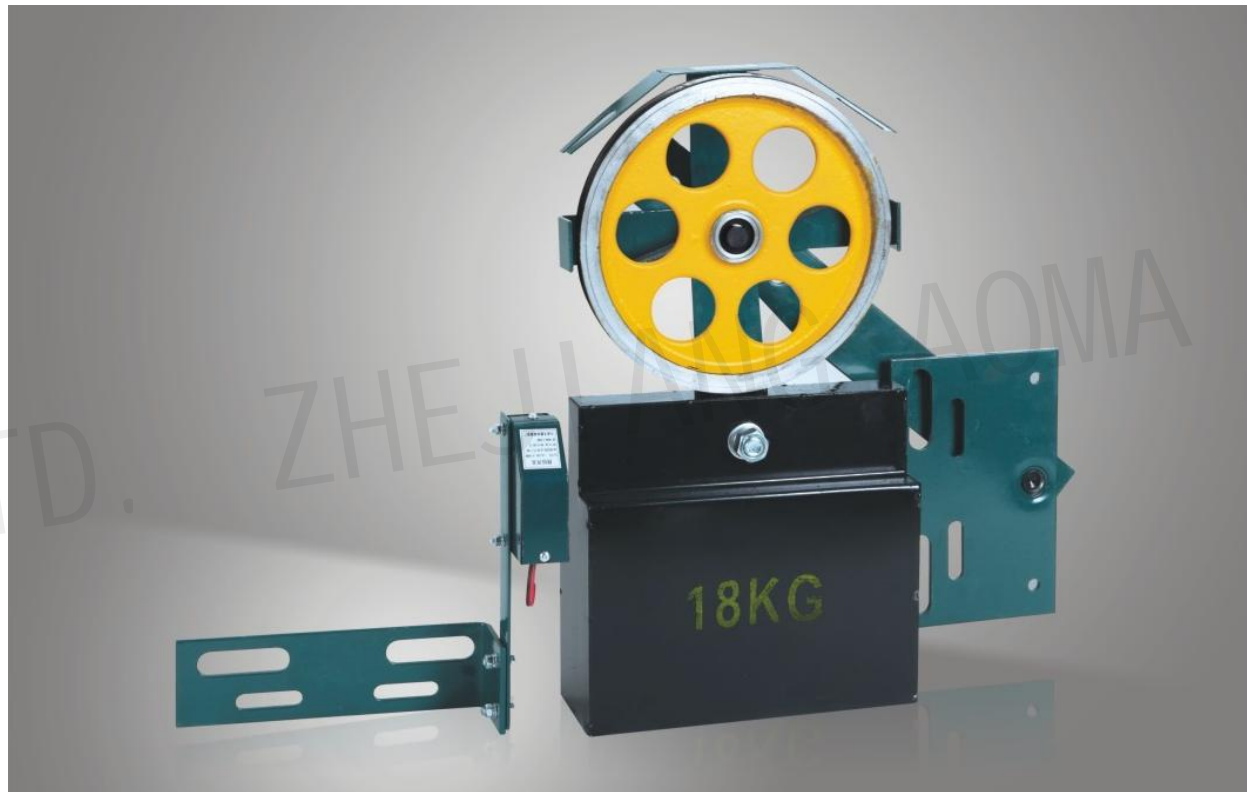


AM-001

One-way speed limiter

SAFETY DEVICES SERIES

TENSIONING DEVICE



AM-300
(Heavy hammer type)

The specific specifications of the sheave of this device can be matched according to the specifications of the speed limiter and the actual use state of the elevator, and the installation and adjustment are convenient, and it is suitable for the structural requirements of the elevator with a compact layout. Provide a variety of counterweight specifications to choose and apply.



AM-300A
Tensioning device (Heavy hammer type)



AM-200
Tensioning device (Swing rod type)



AM-100
Tensioning device (Swing rod type)



AM-100H
Tensioning device (Spring type)



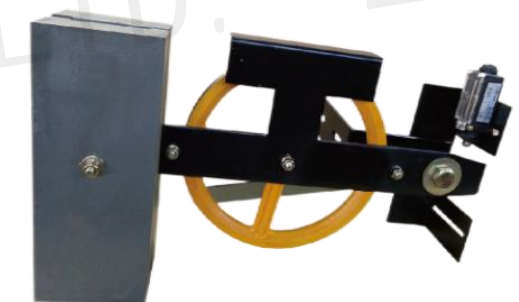
AM-100A
Tensioning device (Spring type)



AM-100B
Tensioning device (Spring type)



TD240G01
Tensioning device



TD240G02
Tensioning device

SAFETY GEAR

The elevator safety gear device is under the control of the speed limiter, when the elevator speed exceeds the speed set by the speed limiter, or when the suspension rope is broken or slack, it is a safety device that stops the car in an emergency and clamps it on the guide rail.

It provides effective protection for the safe operation of the elevator. Generally, it is installed on the car frame or counterweight frame; the safety gear device is composed of two parts: the operating mechanism (safety gear linkage mechanism) and the brake mechanism (safety gear).

SAFETY DEVICES SERIES

SAFETY GEAR



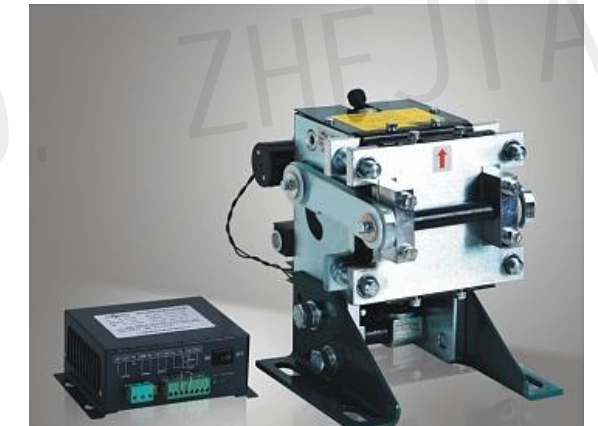
AM-300
Progressive safety gear



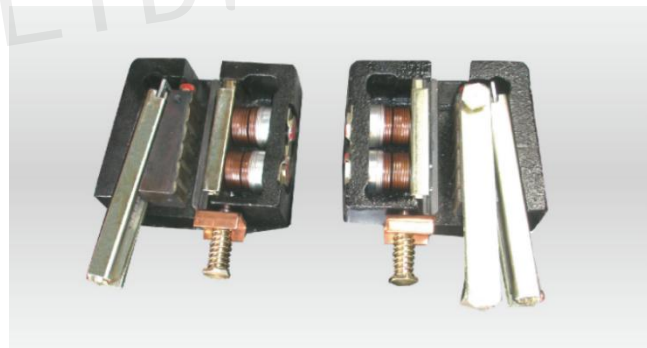
AM-302
Progressive safety gear



AM-250 Rope clamp device
Mechanically triggered type



AM-250 Rope clamp device
Electromagnetic trigger type



AM-303
Progressive safety gear



AM-305
Instantaneous safety gear



AM-288T/AM-188BT
Safety gear linkage mechanism



AM-188T/AM-210BT
Safety gear linkage mechanism



AM-RP001/AM-RP002
Rope clamp device



AM-306
Progressive safety gear



AM-210BZ
Safety gear seat

TRACTION MACHINE

The elevator traction machine is the power equipment of the elevator, also known as the elevator host. The function is to transport and transfer power to make the elevator run. It is composed of electric motor, brake, coupling, reduction box, traction wheel, frame and guide wheel, and accessory disc car hand wheel. The guide wheels are generally installed on the frame or the load-bearing beam under the frame. Some of the barring hand wheels are fixed on the motor shaft, and some are usually hung on the nearby wall, and then set on the motor shaft when in use.

TRACTION MACHINE



AM-PM320
Permanent magnet synchronization



AM-PM200
Permanent magnet synchronization



AM-GTW9S
Gearless Traction Machine



AM-GTW7A
Gearless Traction Machine



AM-GT100
Gearless Traction Machine



AM-GT200
Gearless Traction Machine



AM-GT200B
Gearless Traction Machine



AM-GT300
Gearless Traction Machine

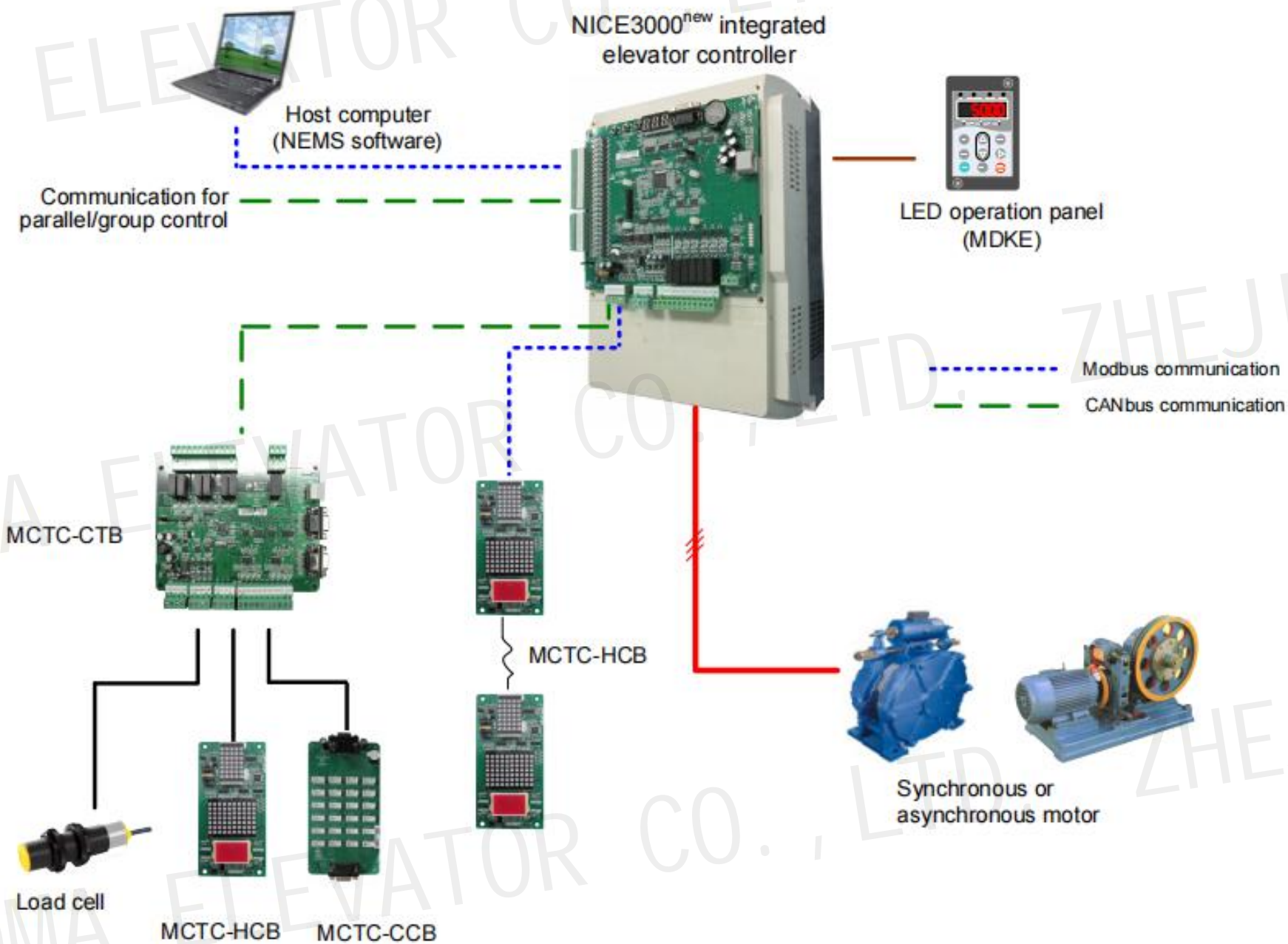
ELEVATOR CONTROLLER

The elevator control cabinet is a device used to control the operation of the elevator. It is generally placed in the elevator machine room, and the control cabinet of the elevator without a machine room is placed in the hoistway.

ELEVATOR CONTROLLER



AM-001 Elevator controller



Machine room



Machine room-lees

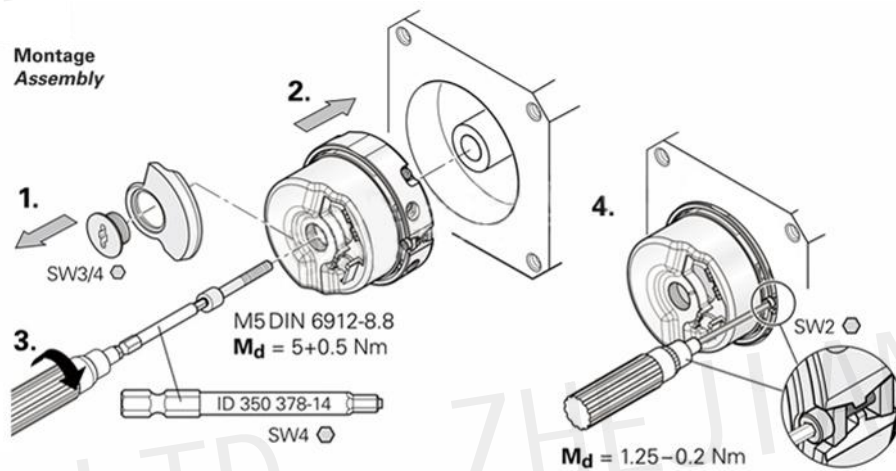
ROTARY ENCODER



AM-52N3
Rotary encoder



The elevator rotary encoder is a sensor that converts the mechanical displacement of rotation into an electrical signal, and processes the signal to detect the position and speed.



AM-2500RF24JY
Rotary encoder

AM-1387
Rotary encoder

FREQUENCY CONVERTER



AM-ME320L
Elevator dedicated inverter



AM-WISE310
Escalator dedicated inverter



AM-ME380
Elevator dedicated inverter

IC SYSTEM SERIES

AM-610
Fingerprint



AM-610A
Access control all-in-one



AM-610B
Standard swiping area



Standard swiping area



Custom aluminum card swiping area

AM-IC01
IC card

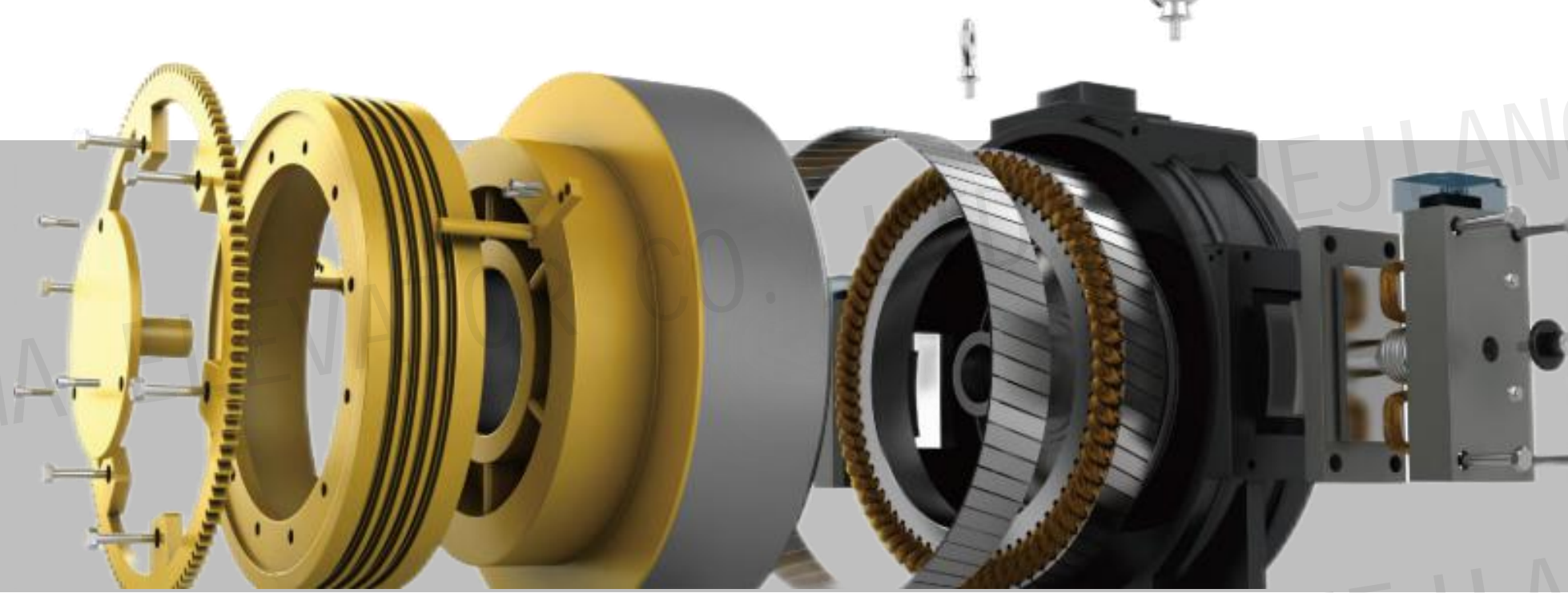


AM-700
Five-way call



ARD

(Automatic Rescue Device)



The ARD(Automatic Rescue Device) is a device designed to provide emergency safety rescue when passengers are trapped due to power failure of the elevator. When the elevator is running normally, the device is in a detection standby state. When the power supply system fails during the normal operation of the elevator, The equipment will be automatically put into rescue work, using the original elevator control system to slowly run the elevator car to the leveling position to stop, open the car door and the hall door, so that the trapped people can quickly and safely leave the elevator.



AM-ARD320
Automatic Rescue Device





GUIDE SHOE

The guide shoe is a slidable guide device between the elevator guide rail and the car or counterweight, it can stabilize the car or counterweight on the guide rail so that it can only move up and down, preventing the car or counterweight from skewing or swinging during operation.

The upper part of the guide shoe can also be equipped with an oil cup to reduce the friction between the shoe lining and the guide rail.

SAFETY DEVICES SERIES

GUIDE SHOE



AM-029



AM310F



AM-310M



AM-501



AM-502



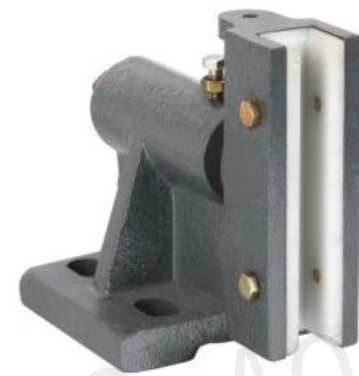
AM-503



AMB22



AM-B22-1



AM-03



AM-520



AM-521



AM-522

SAFETY DEVICES SERIES

GUIDE SHOE



AM-07



AM-847



AM-847W



AM-L10



AM-310C



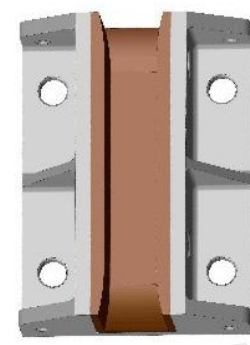
AM-019



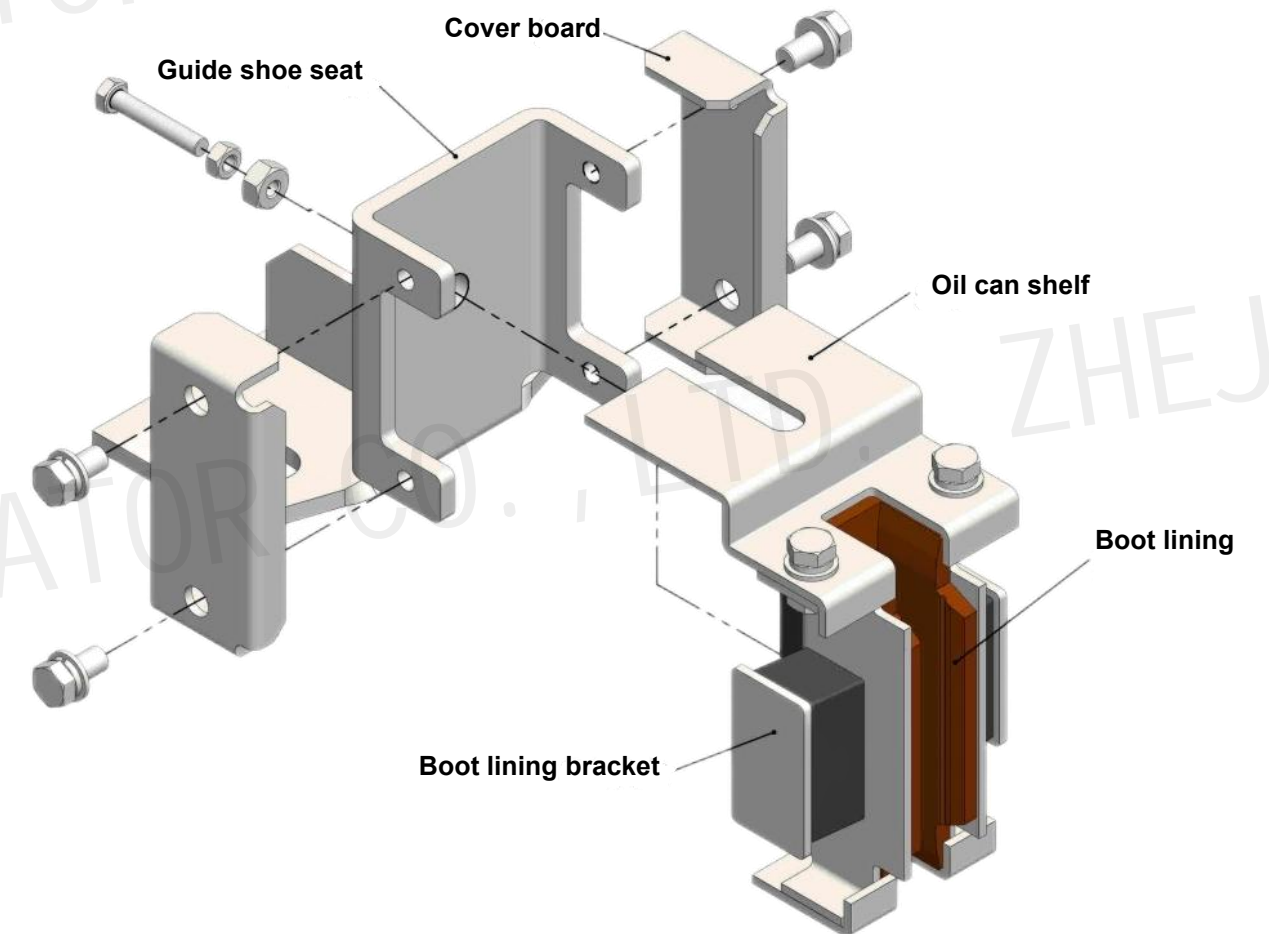
AM-310G



AM-310GW



AM-310H





DOOR DEVICE DOOR MACHINE

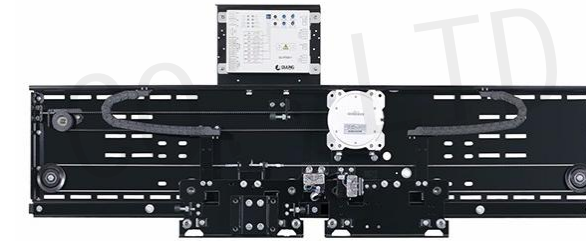
OTHER ELEVATOR PARTS

DOOR MACHINE/OPERATOR

AM01-A 【 Centrally divided single-folding door device 】



AM05-A 【 Center split door machine 】



AM02-A 【 Center split double-folding door device 】



AM06-A 【 Side open double folding door machine 】



AM03-A 【 Side-opening single folding door device 】



AM07-A 【 Center split double door machine 】



AM04-A 【 Side-opening double-folding door device 】



AM08-A 【 Side-opening three-folding door machine 】



OTHER ELEVATOR PARTS

DOOR DEVICE

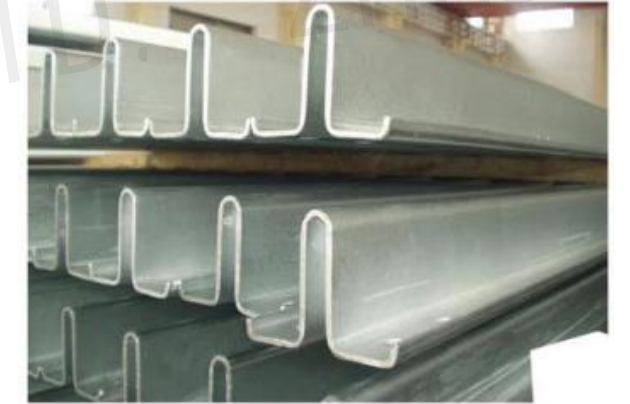
AM600-2C0 Door device



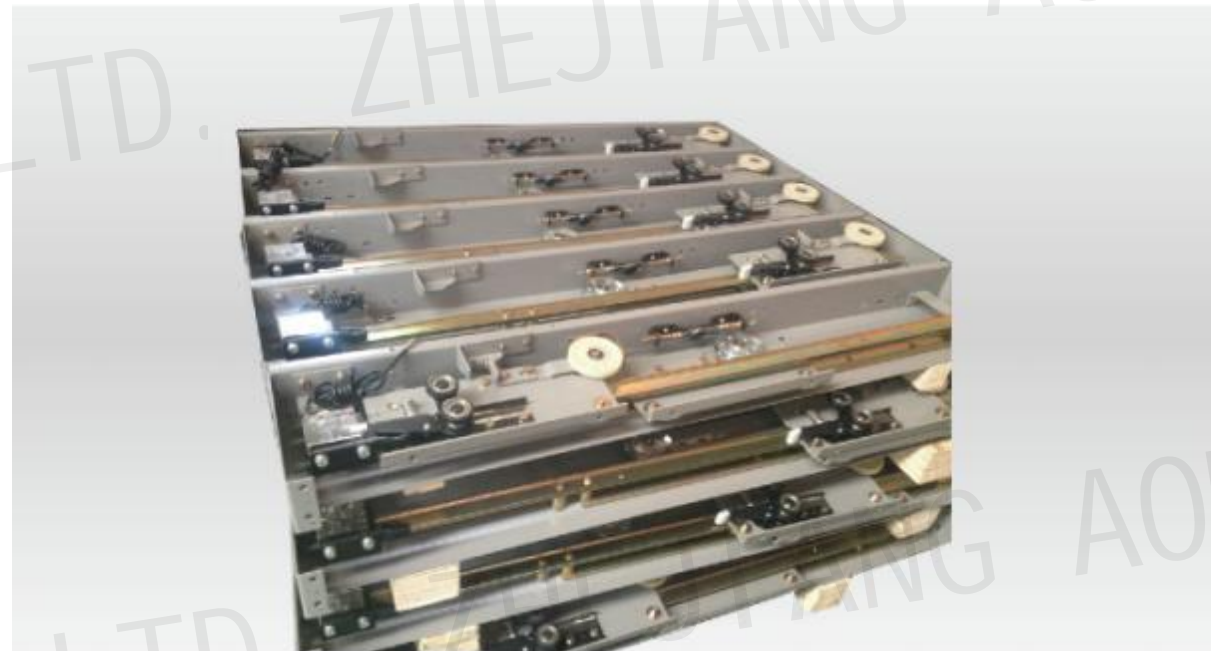
AM600-GR Guide rail



AM600-CGR Counterweight guide rail



AM600-2S Door device



AM-GW600 Guide wheel



AM-LW600 Door leveling switch



OTHER ELEVATOR PARTS

Do my best to provide the best service to your satisfaction.



OTHER ELEVATOR PARTS

OTHRE PARTS

DL01 【Door lock】



AD01 【Anti-deflection device】



SAR01 【Shock absorption rubber】



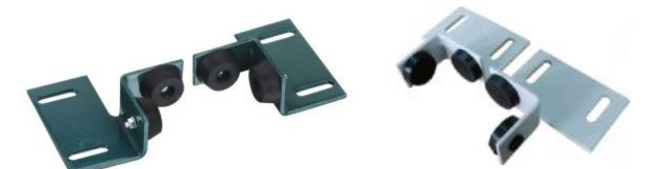
RG01 【Roller guide shoes】



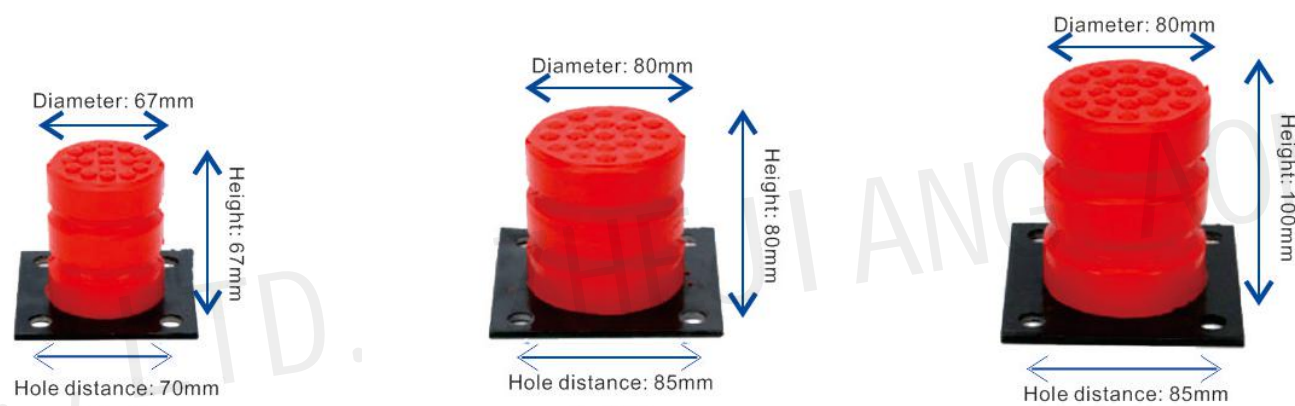
OD01 【Overload device】



CT01 【Car top card board】



SA01 【Shock absorber】



CF01 【Cross flow fan】



RF01 【Round fan】



OTHER ELEVATOR PARTS

OTHER PARTS

CC01 【Compensation chain】



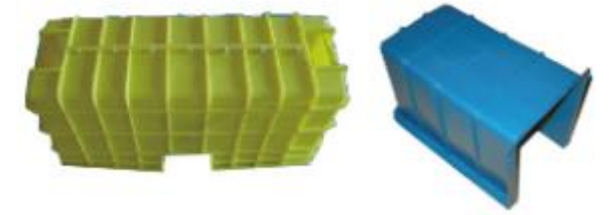
WR01 【Wire rope】



LA01 【Rope protection cover】



BG01 【Beam guard】



RH01 【Rope head combination】



SW01 【Scroll wheel】



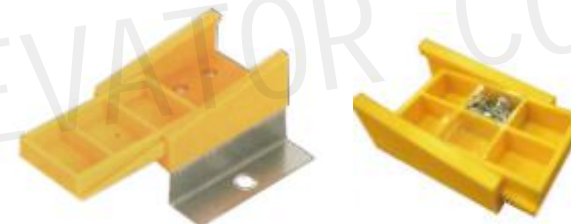
EL01 【Elevator light curtain】



EA01 【Elevator air conditioner】



CC01 【Cable clamp】



OC01 【Oil can】



OTHER ELEVATOR PARTS

OTHER PARTS

GD01 【 Guiding device 】



SD01 【 Suspension device 】



HH01 【 Heavy hammer catheter 】



DS01 【 Door seal 】



HB01 【 Hydraulic buffer device (External spring/built-in spring) 】



AC02 【 Air conditioning cable 】



AC01 【 Travelling cable 】



CL01 【 Counterweight lower beam assembly 】



AM 【 Door slider 】



OB01 【 Inspection box 】



HB01 【 Hilti bolt 】



OC02 【Oil collector】



OC01 【Oil can】



OC01 【Oil can】



BL01 【Boot lining】



BL02 【Boot lining】



SW01 【Switch】





CMP-01 (Standard)



CMCB-01 (Standard)



CMCB-01A (Optional)



CMP-04 (Optional)



CMP-02 (Optional)



CMCB-02 (Optional)



CMCB-02A (Optional)



CMCB-02B (Optional)



CMP-03 (Optional)



CMCB-03 (Optional)



CMCB-03A (Optional)



Hairline stainless steel (Standard)



Mirror stainless steel (Optional)



Titanium gold stainless steel (Optional)



CMD-01 LCD display (Standard)



CMD-02 TFT display (Optional)



CMD-03 Advertising display (Optional)



OTHER ELEVATOR PARTS

HANDRAILS AND FLOOR



CMH-01 Optional



CMH-02 Optional



CMH-03 Optional



CMH-04 Optional



CMH-04 Optional



CMH-05 Optional



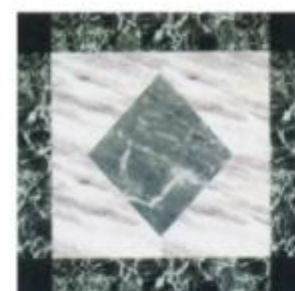
CMH-06 Optional



CMH-07 Optional



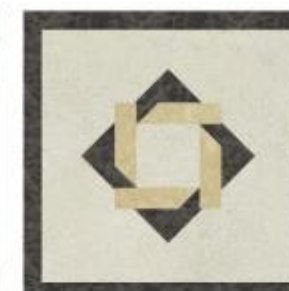
CMH-08 Optional



CMF-01 Optional



CMF-02 Optional



CMF-03 Optional



CMF-04 Optional



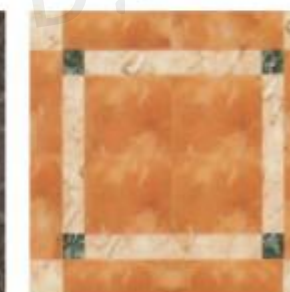
CMF-05 Optional



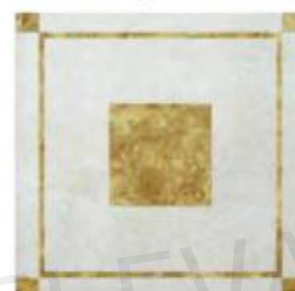
CMF-06 Optional



CMF-07 Optional



CMF-08 Optional



CMF-09 Optional



CMF-10 Optional



CMF-11 Optional



CMF-12 Optional



CMF-13 Optional



CMF-14 Optional



CMF-15 Optional



CMF-16 Optional

OTHER ELEVATOR PARTS

CEILING SERIES



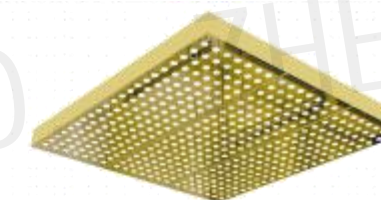
CMC-01 Optional



CMC-06 Optional



CMC-11 Optional



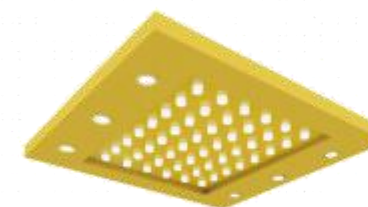
CMC-16 Optional



CMC-02 Optional



CMC-07 Optional



CMC-12 Optional



CMC-17 Optional



CMC-03 Optional



CMC-08 Optional



CMC-13 Optional



CMC-18 Optional



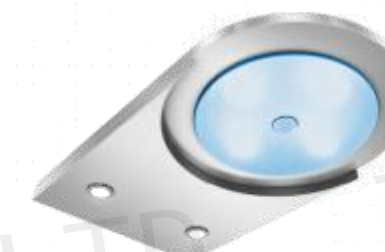
CMC-04 Optional



CMC-09 Optional



CMC-14 Optional



CMC-19 Optional



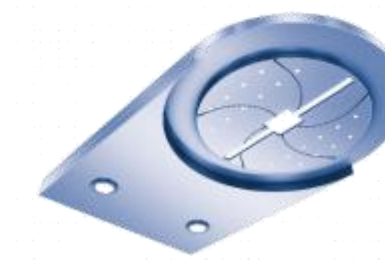
CMC-05 Optional



CMC-10 Optional



CMC-15 Optional



CMC-20 Optional



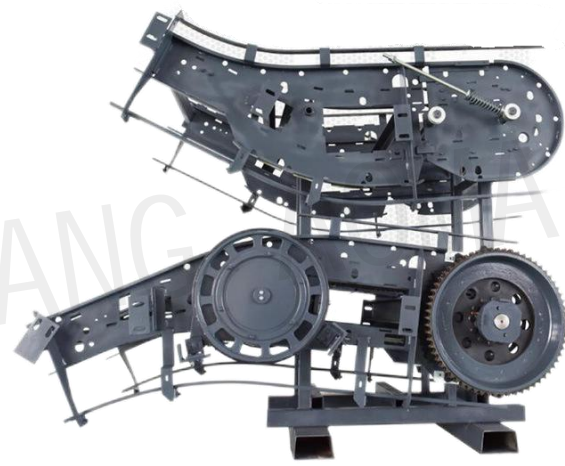
ESCALATOR PARTS

OTHER ELEVATOR PARTS

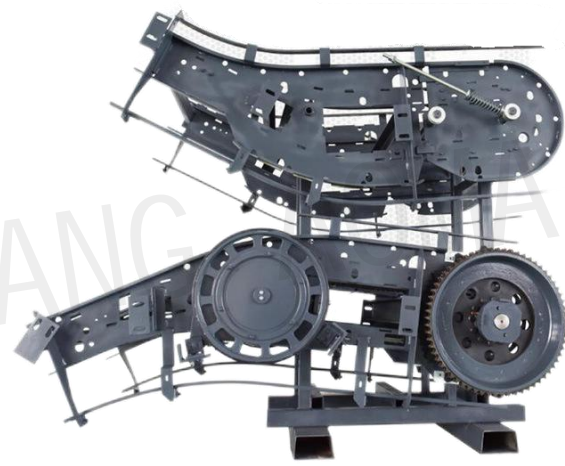
ESCALATOR PARTS



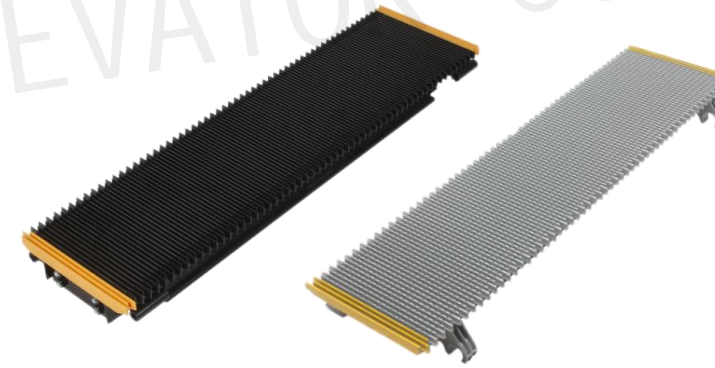
AM-500 Escalator driving machine



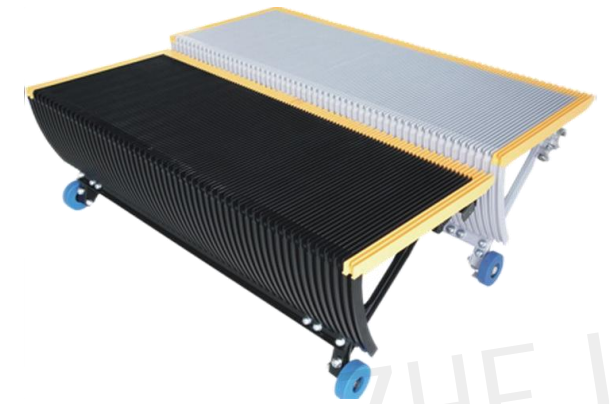
AM-510
Escalator driving machine



AM-520
Support roller



AM-MS600 Moving walk steps



AM-600 Step



AM-530
Step wheel

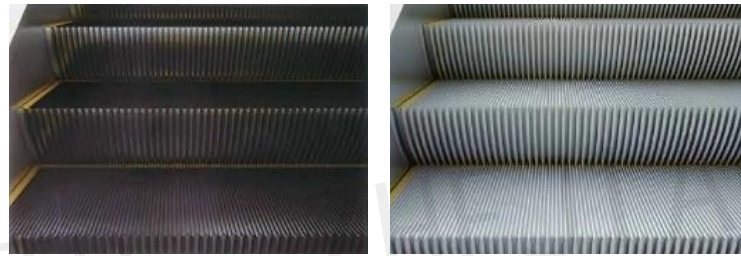


AM-540
Slewing chain

OTHER ELEVATOR PARTS

OTHER PARTS

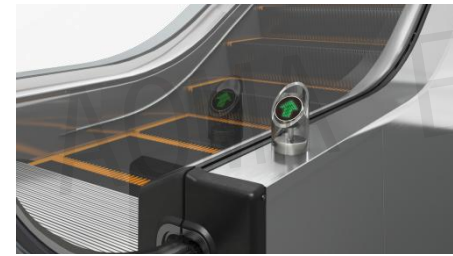
AM-600 【Step】



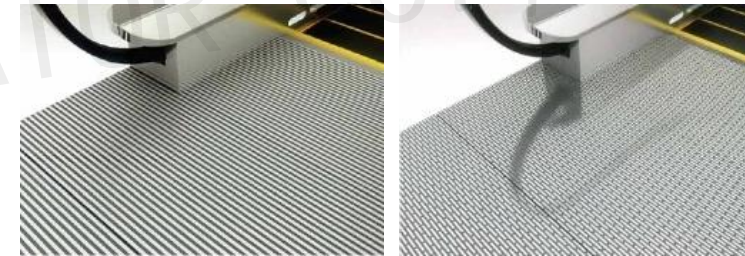
Black stainless steel

Aluminum alloy

AM-601 【Indicator light】



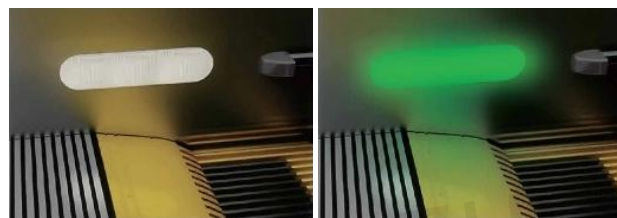
AM-605 【Landing plate】



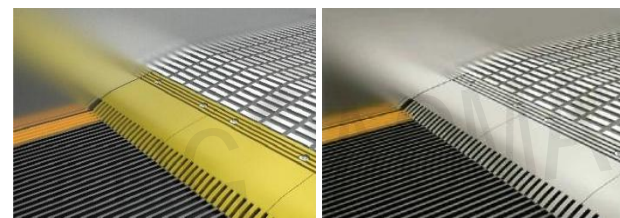
AM-606 【Direction indicator】



AM-602 【Comb light】



AM-603 【Comb light】



AM-607 【Skirt panel lighting】



AM-604 【Handrail】



AM-608 【Inner/outer decking】

